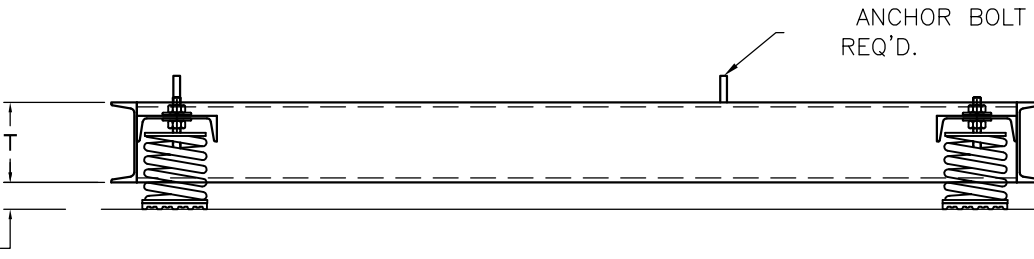
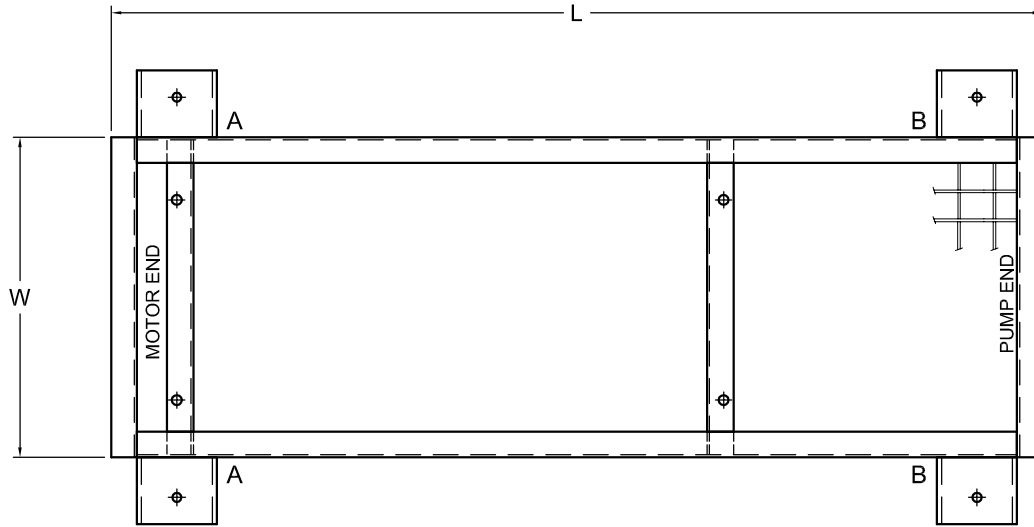


REV.	DESCRIPTION	DATE	BY

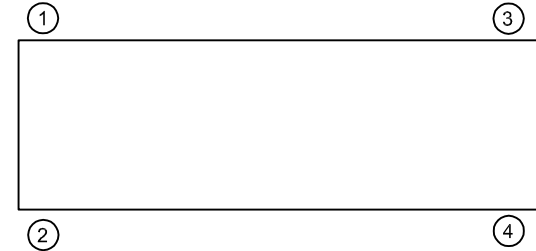


TAG:

NOTE: ( ) BASE(S) REQUIRED.  
ALL DIMENSIONS IN INCHES.

CONCRETE WEIGHT \_\_\_\_\_

BASE SHIPPING WEIGHT \_\_\_\_\_



**NOTES:**

- HEIGHT OF PRODUCT VARIES PER MOUNT.
- CLEARANCE UNDERNEATH THE UNIT VARIES PER FRAME CONSTRUCTION.
- LENGTH AND WIDTH VARIES PER APPLICATION DEMANDS OR PRODUCT CONSTRUCTION.
- METHOD OF FRAME OR BASE ATTACHMENT TO ISOLATORS MAY VARY PER FRAME OR MOUNT.
- MOUNT ILLUSTRATION MAY VARY PER APPLICATION OR PROJECT REQUIREMENTS.
- ANCHORING OR BOLT DOWN REQUIREMENTS VARY PER MOUNT OR PROJECT REQUIREMENTS.
- INSTALLATION INSTRUCTIONS VARY PER MOUNT OR PROJECT REQUIREMENTS; CONTACT MANUFACTURER FOR INSTALLATION INSTRUCTIONS.
- STEEL FRAMING, REBAR, TEMPLATES, BRACKETS, ISOLATORS BY VMC. INSTALLATION BY OTHERS.
- CUSTOM CUT LENGTH AND WIDTH AVAILABLE; CONTACT VMC FOR AVAILABILITY.
- RATED DEFLECTIONS ARE WITHIN 25% OF NOMINAL. HIGHER DEFLECTIONS ARE ALLOWED IF THEY MEET SPECIFICATIONS.

**ISOLATOR SELECTIONS**

LOC 1:	LOC 2:
LOC 3:	LOC 4:
CUSTOMER EQP'T. TAG:	

NOTE: MATERIAL SHOWN IS FOR (1) SET.

OTHER MATERIALS, COMPOUNDS, OR FINISHES WITH EQUAL OR SUPERIOR PROPERTIES MAY BE SUBSTITUTED AS THEY BECOME AVAILABLE.

**CERTIFIED FOR:**

JOB NAME: \_\_\_\_\_  
 CUSTOMER: \_\_\_\_\_  
 CUSTOMER P.O.: \_\_\_\_\_  
 SALES ORDER: \_\_\_\_\_

**MODEL CPF NON SEISMIC INERTIA PUMP  
 BASE 5 INCH DEFLECTION**



**THE VMC GROUP**  
*The Power of Together*  
 Bloomingdale, NJ 07403  
 Houston, TX 77041

SCALE:

NONE

SHEET:



DRAWING NO.:

REVISION